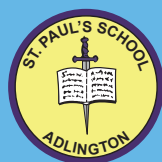




LEARNING TOGETHER TRUST





WELCOME TO LEARNING TOGETHER TRUST

A very warm welcome to our School Trust.

Learning Together Trust has a single legal and moral purpose: **to advance education for the public benefit.**

We are a family of schools, who work in partnership, to ensure that every child within each school receives the best education, rooted in Christianity, that equips them for success in the next phase of their learning and later life. Collaboration is at the heart of the Learning Together Trust. We are outward-facing, working collaboratively within our family, whilst also embracing opportunities to form partnerships outside of our School Trust.

Learning Together Trust currently has six schools, who are each unique and at different stages of their journey to excellence, all making valuable contributions towards improving and maintaining high educational standards across our School Trust. Our schools benefit from working across two different Dioceses and two different Local Authorities.

We help our local communities to thrive by giving our children an education of the highest quality, a broad range of **extra-curricular** opportunities, exciting and engaging **enrichment** provision, and unique and memorable **experiences.**

Schools in our Trust family enjoy many benefits, including: the sharing of ideas, expertise and 'best practice'; structured career pathways and professional development; and specialist support, enabling teachers and school leaders to focus on teaching and learning.

St. Wilfrid's Church of England Primary Academy is the founding school of the Learning Together Trust and has received approval from the Department for Education to sponsor and support underperforming academies.

Learning Together Trust is committed to welcoming new schools and sharing our distinctly Christian ethos and spirit of collaboration.

Mr. S Colothan
Co-CEO

Mrs. J Woodcock
Co-CEO

'WITH GOD, ALL THINGS ARE POSSIBLE.'
MATTHEW 19:26

OUR TRUST CENTRAL TEAM



Mr. S Colothan
Co-CEO
& Accounting Officer



Mrs. J Woodcock
Co-CEO



Mrs. R Crompton
Finance & Operations
Director



Mrs. A Hollingshead
Finance Officer



Mrs. L Morgan-Hillam
Head of
School Improvement



Mr. M Rigby
Head of
System Leadership



Lottie
Our Trust Dog

OUR TRUST SCHOOLS



St. Wilfrid's Church
of England Primary
Academy



Canon Sharples Church
of England Primary
School & Nursery



St. David's Haigh
and Aspull Church of
England Primary School



Adlington St. Paul's
Church of England
Primary School



Hesketh-with-Beaconsall
All Saints Church of
England Primary School



Benjamin Hargreaves
Church of England Primary
School



OUR VISION

‘With God, all things are possible.’ Matthew 19:26

1. Our children will be Resilient, Respectful, Responsible, Reflective and Ready to thrive and succeed in life
2. Our schools will be Resourced with the ‘best’ staff
3. Our Trust will have a Reputation for Excellence:
 - School of choice
 - Employer of choice
 - Trust of choice

OUR MISSION STATEMENT

‘Learning Together...to achieve success for all God’s children.’

With Christ at the centre of all that we do, we will create a culture of collaboration and excellence and take our Trust on a journey of growth and success.



OUR AIMS

‘I can do things you cannot, You can do things I cannot, Together we can do great things.’ Mother Teresa

1. To inspire children through the highest quality education, underpinned by Trust Values and Christian Distinctiveness.
2. To recruit excellence through reputation and collaboration.
3. To retain quality and ‘Manage Talent’ through enthusing, enabling and empowering.
4. To provide all schools with the pastoral care, support network, resources and developmental challenge to add value.

OUR VALUES

Our Christian Values, which are rooted in scripture, are at the heart of our Schools and our Trust. They help us to live out the Church of England Christian Vision of ‘Life in all its Fullness’.

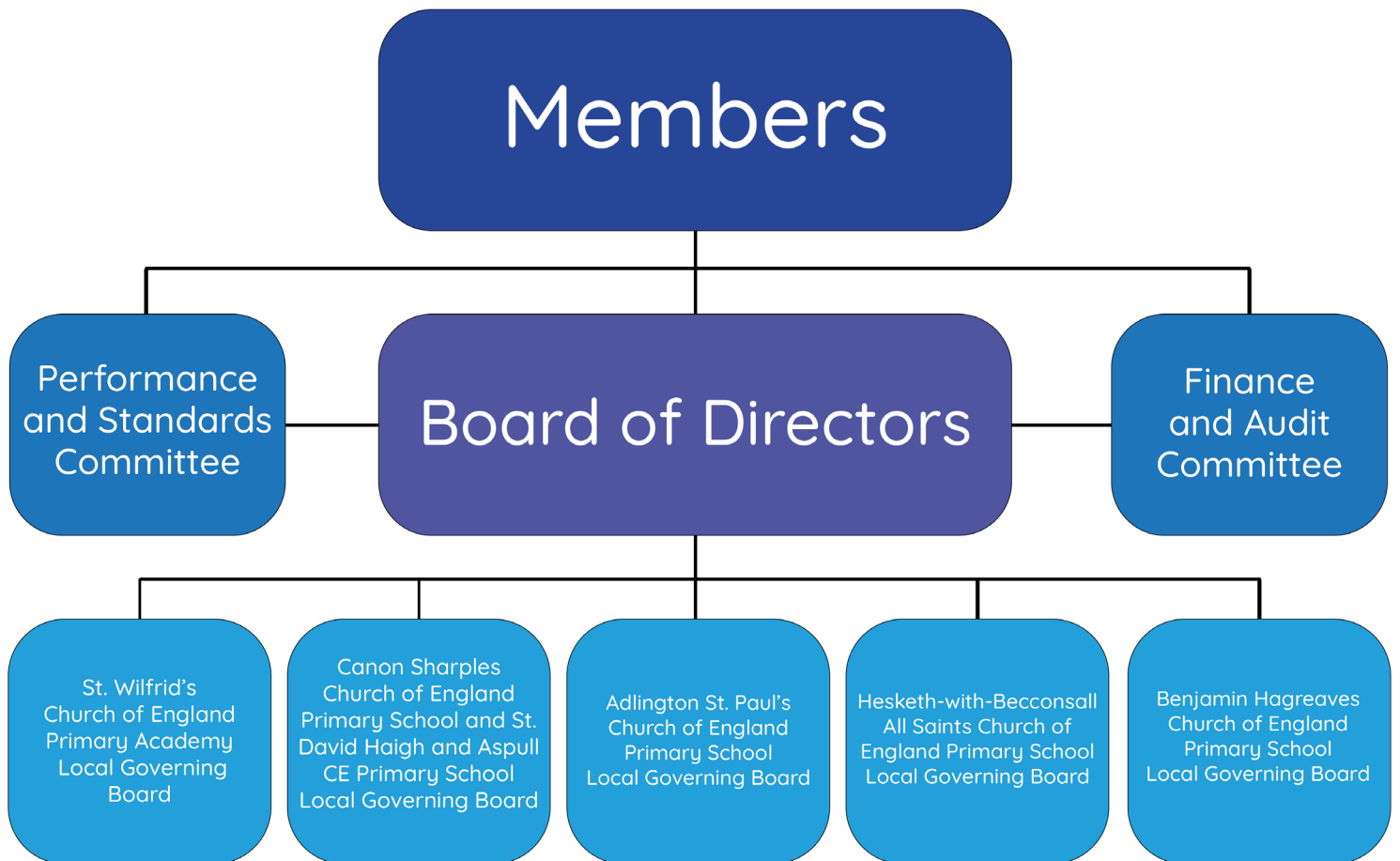
Trust: ‘The Lord is your strength and shield. **Trust** Him.’ Psalm 28:7

Love: ‘Let all that you do be done in **Love**.’ 1 Corinthians 16:14

Hope: ‘Always put your **Hope** in God.’ Psalm 42:5



OUR TRUST GOVERNANCE STRUCTURE



A MESSAGE FROM OUR CHAIR

Welcome to the Learning Together Trust.

In this prospectus you will gather very quickly what marks us out as the Trust to join.

Core to our values as a Trust are our Christian values and providing an excellent experience in education. What matters most is that any child attending one of the schools of the Trust will be given every opportunity to flourish. We are passionate about providing an environment of teaching and learning which enables each child to achieve their potential.

Each School is staffed by a dedicated Team of Teachers who desire the very best for each child. They are supported by a Senior Team who encourage those teaching outcomes. The support of the whole staff Team makes each School unique but very much a part of the Family of Schools in the Learning Together Trust.



I hope that through reading this prospectus you will be excited enough to take the next step and invite us to share with you our shared vision for the future of providing a teaching and learning environment in which each member of the community of schools, whether staff member or child, flourishes and achieves their potential

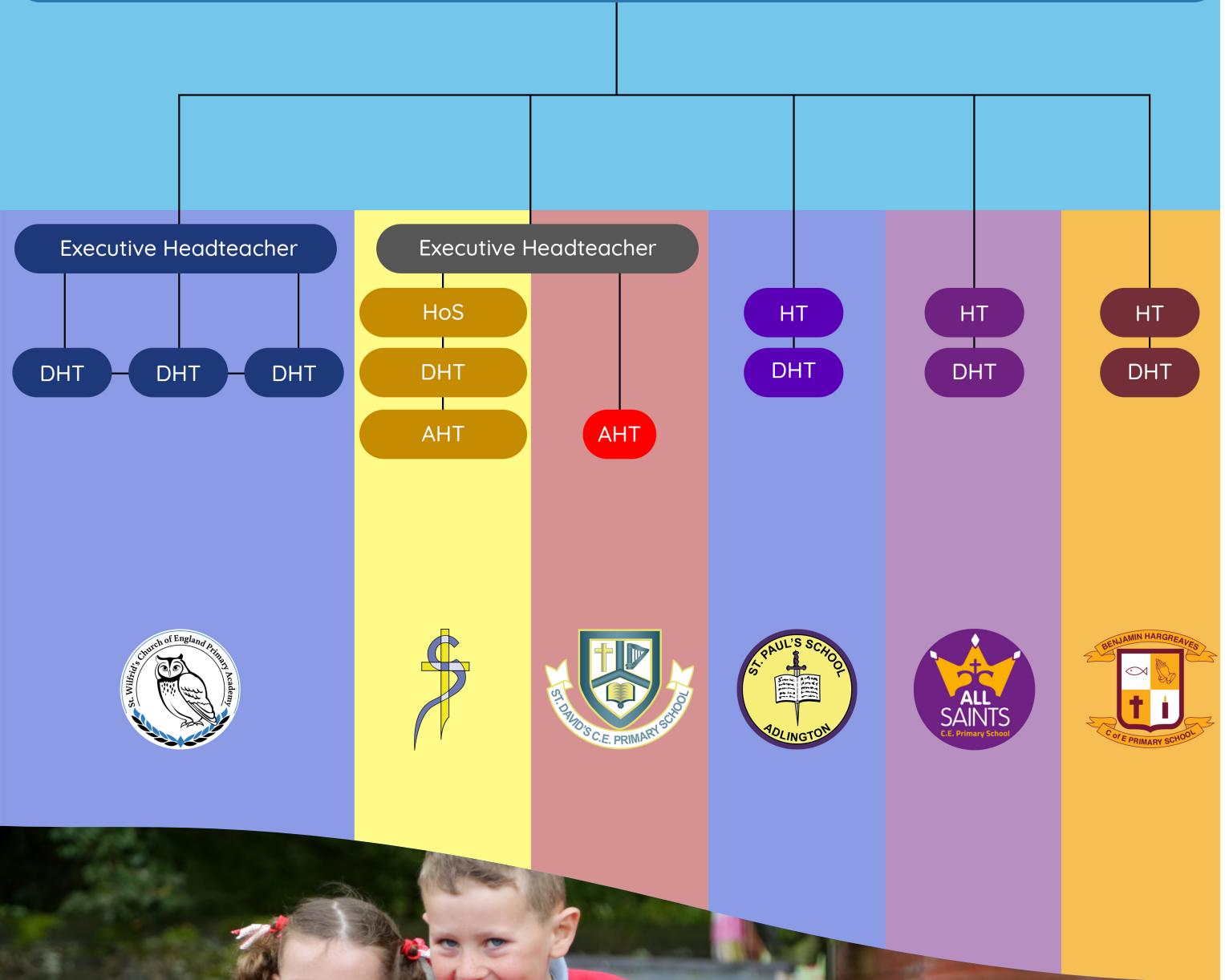
We look forward to meeting you and welcoming you to the Learning Together Trust.

The Rev'd Canon Andrew Holliday



OUR TRUST LEADERSHIP STRUCTURE

Learning Together Trust Central Team



OUR TRUST SERVICE OFFER

Learning Together Trust can offer a range of services to support all schools in our Trust family.

These include:

- School Improvement Teams.
- Support with academy conversion.
- Expert financial management.
- Strategic support from our Executive Headteachers.
- Headteacher Performance Management.
- Bespoke support from our Head of School Improvement.
- Opportunities to share 'best practice'.
- Collaboration and networking groups.
- Continuous Professional Development, including NPQs.
- Trust conferences and shared INSET days.
- Business continuity.
- Estate management.
- Statutory compliance.
- Economies of scale e.g. HR, GDPR, website, IT support.
- Intensive support for Ofsted and SIAMS inspections.
- Support with SEF and SDP writing.
- Policies and practices.
- Trust 'Experiences' for all children.
- Opportunities for pupil collaboration.
- Access to our Trust minibus.
- Round the clock guidance and support from our Trust Central Team.

You are warmly welcome to discuss our full service offer with our Trust Leadership Team.



All children in our Trust family enjoy a menu of experiences during their time at primary school to enhance cultural capital.

NURSERY A den making experience

RECEPTION A country walk with outdoor entertainment

YEAR 1 A visit to a contemporary circus

YEAR 2 A visit to a live music event



EXPERIENCES

Children take part in these experiences together, collaborating with children from other schools in our Trust family. These experiences are paid for by Learning Together Trust and parents and carers are not required to contribute.

YEAR 3 A visit to an art gallery

YEAR 4 An experience of water sports

YEAR 5 An experience of a winter sport

YEAR 6 A University visit





OUR TRUST PRAYER

Dear Lord,

Thank you for our Trust family,

Guide us to do our best in everything that we do,

Let us follow Jesus; to **Love** and **Trust** one another

Make us beacons of **Hope** in our communities,

For with you, we know that all things are possible.

Amen

LEARNING TOGETHER TRUST

 C/O ST. WILFRID'S CHURCH OF ENGLAND PRIMARY ACADEMY
RECTORY LANE
STANDISH
WIGAN
WN6 0XB

 BMAN@SAINTWILFRIDS.WIGAN.SCH.UK

 01257 423992

 @LT_TRUST